

| | | |
|---------------------------------------|--|------------------------------------|
| An/To: All customers | Von/From: GEA PHE Systems Brazed | Date/Datum December 2011 |
|---------------------------------------|--|------------------------------------|

GEA BRAZED Select – Installation manual GBS2012

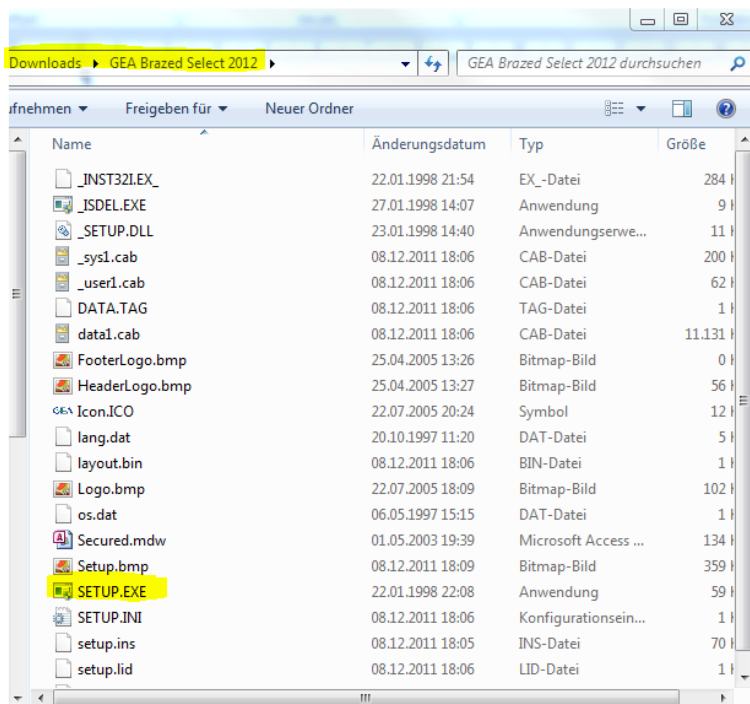


GBS 2012 – Installation of GBS

1. Create a new folder **on your local drive** (e.g. C:\Download Disk)
2. Download the software (GEA Brazed Select 2012) and unzip the software in **the local folder**.

<http://www.gea-phe.com/themes/news-downloads/calculation-software/>

3. Start the setup application to install the software.



If you are asked for a password please fill in a password of your choice and remember it.

Otherwise the preselected password is **“GEA”!**

4. After the setup is completed you can run GBS2012 on two ways:

A: Windows start menu--> GEA Brazed Select 2012.1-->HE Calculation



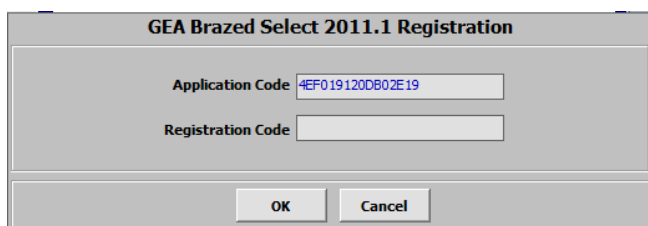
B: Use the shortcut button on your desktop



5. Registration: If you run the software the first time, you will be asked for the Registration Code according to a given Application Code. Please send the Application Code to one of the following persons:

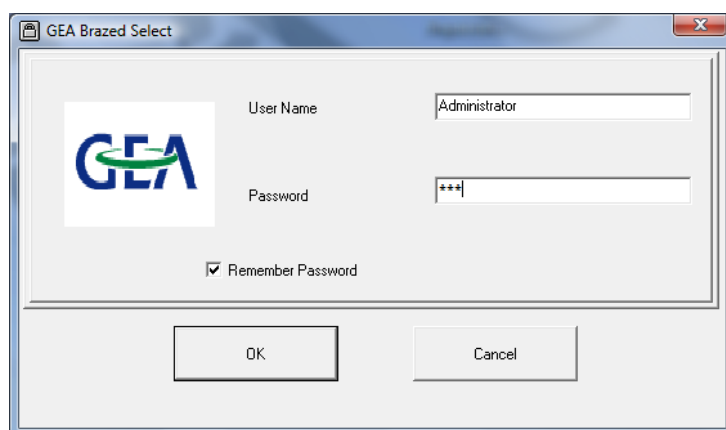
Ms. Lisa Kolbe
Mr. Christian Elliger

lisa.kolbe@geagroup.com or
christian.elliger@geagroup.com .



They will provide you with the required Registration Code soon.

6. After you entered the Registration Code, the software will start and the login screen will appear.



Please note: The User name is always Administrator. Do not change this! The password to be entered is the same which was given during the installation (compare point 3).

If you don't enter your own password during the installation, the preselected password is "GEA".

Your GEA PHE Systems Brazed team
December 2011